



USB DISPLAY ADAPTER



Quick Installation Guide

DA-70833

1. Installing the Driver

Caution: DO NOT connect the adapter to your computer before installing the provided driver.

Insert the provided CD into your disc drive and the installer program will run automatically when the **Driver CD** is inserted. Then follow the on-screen prompts to complete the installation.

For Windows Vista / 7 users:

- Please click on **Run Setup.exe** to execute the installer program.
- If you encounter a **User Account Control** dialog box when attempting to install a program, enter an administrator password or click **Allow** to start the installation.
- When prompted to restart your computer, click **Yes**. Note that a reboot is always needed for a successful installation. If the reboot prompt doesn't appear, make sure to manually reboot your computer.

For Windows 2000 / XP users:

- If prompted for system patch after running the setup file, please download and install the required patch first. After that, execute the setup file again to install the driver.

2. Making the Connection

Connect the smaller end of the USB cable to the adapter. Then connect the other end of the USB cable to an USB 2.0 port on your computer.

If your monitor is not yet connected to the adapter, make the connection and power on your monitor.

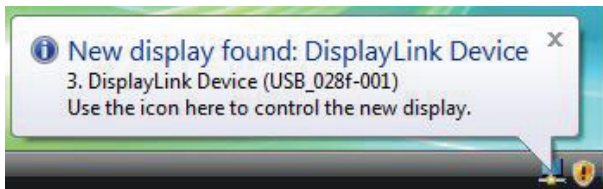
After the connection, Windows will automatically complete the installation. On Windows Vista, if the add-on monitor is blank, reboot your system again.

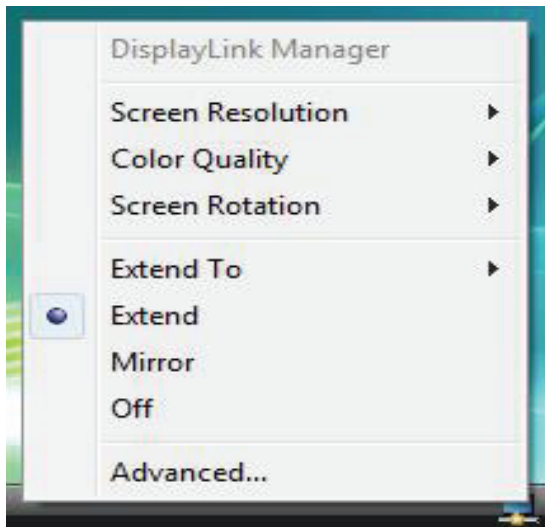
Note: Before the installation is complete, it's normal that the screen flicks black a couple of times.

3. Changing the Display Mode

There are several ways you can utilize the monitor attached on the adapter. The add-on monitor can be configured to use either “mirror mode” or “extended mode” (extend your Windows desktop to the add-on monitor).

Click on the **DisplayLink Device** icon to control the display adapter and select to configuration **Display Properties** as below.





(The above string will depends on each display adapter)

This ***Quick Installation Guide*** describes only the basic instructions on installation. For more information, please refer to the ***User's Manual*** on the provided CD-ROM.